



Verona Technology Park

Verona, Wisconsin



LEASING . DEVELOPMENT . MANAGEMENT

Livesey Company . Madison, WI . Phone: 608/833-2929 . www.liveseycompany.com

Madison

Verona Ave

(32,500) Hwy 18/151 / Verona Road

(18,200)

(10,200)

(5,000)

Hwy M

SITE

Specialized Electric



Kwik Trip
INCORPORATED

LATITUDE

SAFC

Hwy PB



Epic

(12,400) Verona Ave

(32,500)

(22,300)
Hwy 18/151 / Verona Road

(18,200)

Hwy 18/151 / Verona Road

Kwik Trip
INCORPORATED (10,200)

Hwy M

(5,000)

LATITUDE

SITE

Specialized Electric



SAFC

Hwy PB



Hwy M

SITE

**Kwik
TRIP**
INCORPORATED

Specialized
Electric



LATITUDE

SAFC
Mapping Science

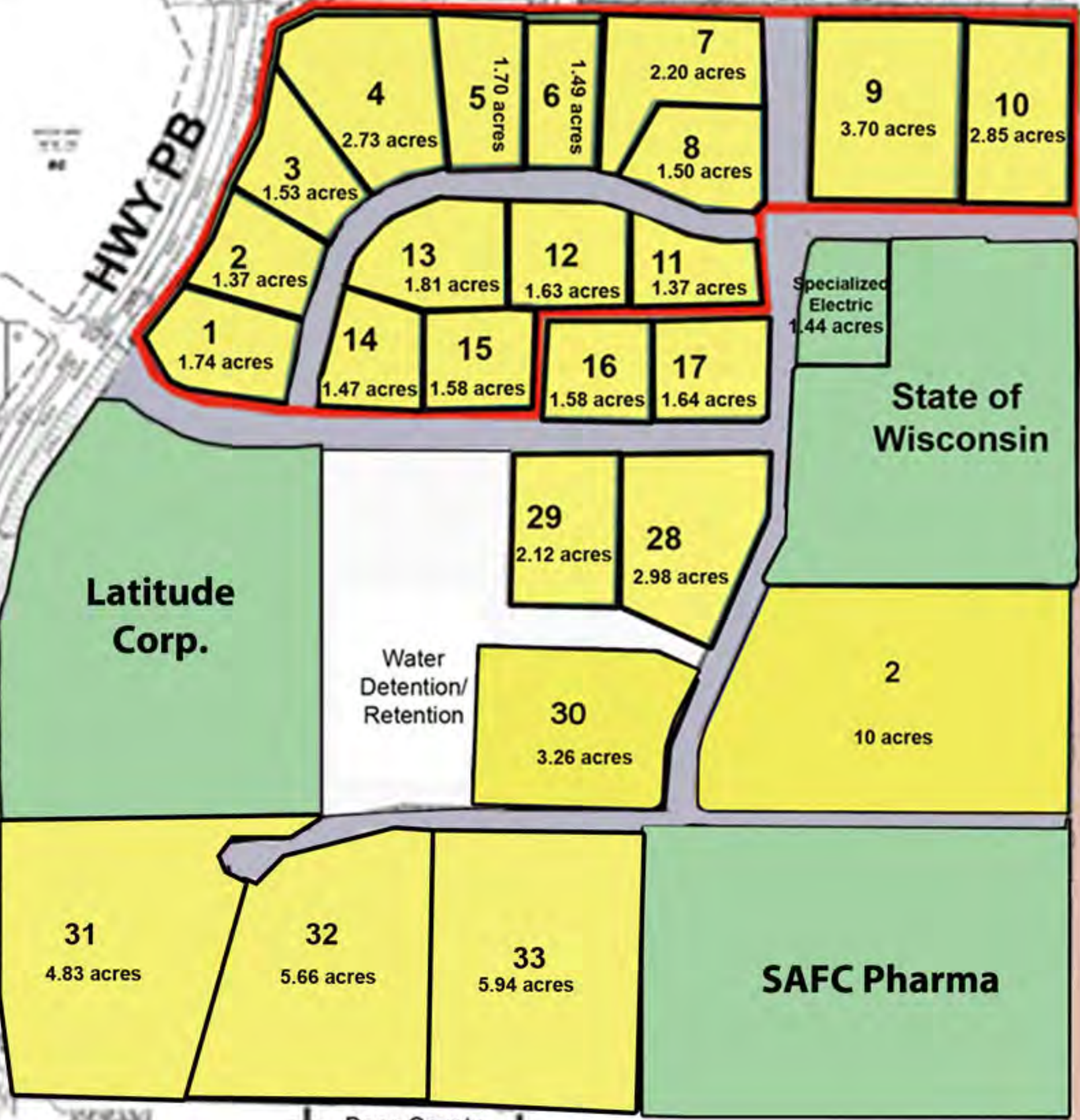
Hwy PB




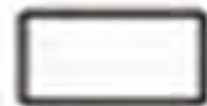


HWY M

HWY PB



ZONING

-  "Suburban Commercial"
-  "Suburban Industrial"

PRICING

\$4 to \$12 per square foot
(Varies depending on lot size,
location and other factors)

-  Available
-  Sold

Demographic Trend Comparison

2000 Census, 2010 Estimates & 2015 Projections

Prepared for Livesey Company

Lat/Lon: 42.971811/-89.510722



May 2011

Verona Technology Park Verona, WI

	1 Mile Radius	3 Mile Radius	5 Mile Radius	7 Mile Radius
Population				
Estimated Population (2015)	2,572	22,274	67,680	128,329
Total Population (2010)	2,232	18,836	60,582	116,499
Total Population (2000)	1,218	10,913	46,133	92,382
Households				
Estimated Households (2015)	783	7,683	24,160	48,504
Total Households (2010)	709	6,725	22,477	45,821
Total Households (2000)	404	4,065	18,024	38,458
Housing Units				
Estimated Housing Units (2015)	859	8,464	26,731	53,797
Total Housing Units (2010)	777	7,406	24,892	50,859
Total Housing Units (2000)	414	4,178	18,678	39,900
Average Household Income				
Estimated Household Income (2015)	\$93,613	\$98,718	\$99,106	\$106,048
Total Household Income (2010)	\$86,629	\$90,912	\$89,871	\$95,160
Total Household Income (2000)	\$73,548	\$73,944	\$68,156	\$68,904
Median Household Income				
Estimated Median Household Income (2015)	\$84,603	\$82,311	\$77,577	\$77,153
Median Household Income (2010)	\$81,619	\$78,824	\$73,033	\$71,120
Median Household Income (2000)	\$70,139	\$66,283	\$58,620	\$55,577

